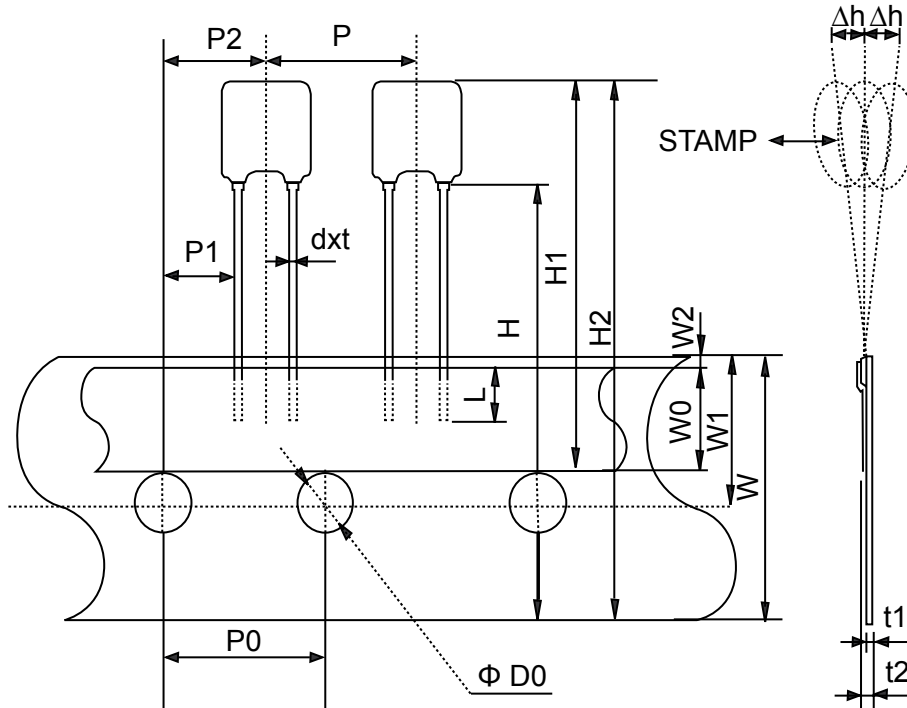




# Ceramic Resonators and Filters

## Radial Taping Dimensions of Resonators and Filters

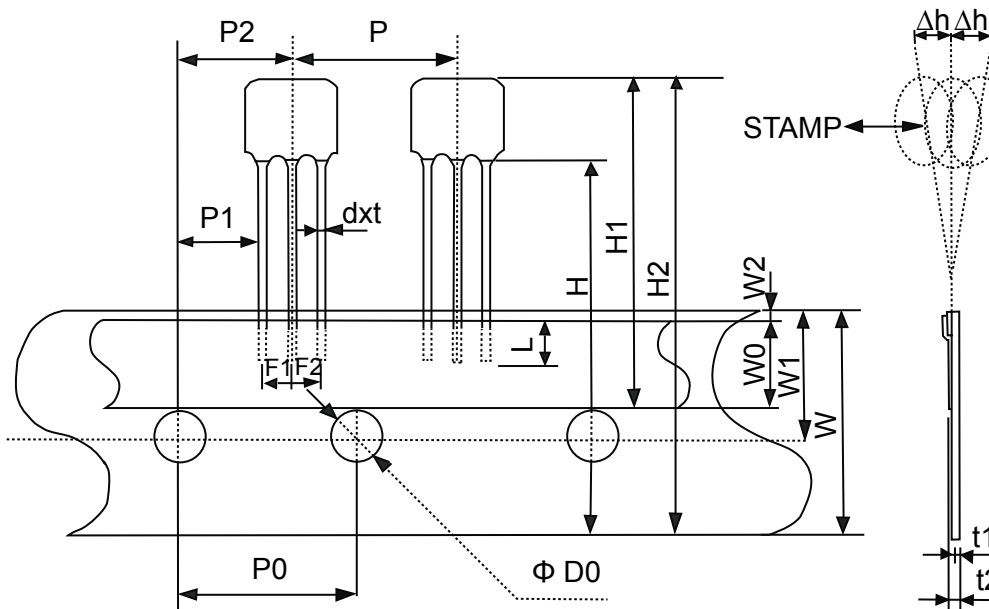
### ► Radial Taping Dimensions



Mark	Size(mm)
P	12.7±0.5
P0	12.7±0.2
P1	3.85±0.5
P2	6.35±1.3*
F	0.5 <sup>+0.5</sup> <sub>-0.3</sub>
dxt	0.5x0.3(±0.1)
W	18.0±0.5
W0	5.5±0.5
W1	9.0±0.5
W2	1.0max
H	18.0 <sup>+0.5</sup> <sub>-1.0</sub>
H1	27.0max**
H2	36.0max**
L	3.0main
ΦD0	4.0±0.2
t1	0.6±0.2
t2	1.5max
Δh	1.0max

\*Include the slant of products

\*\*Varies with part number

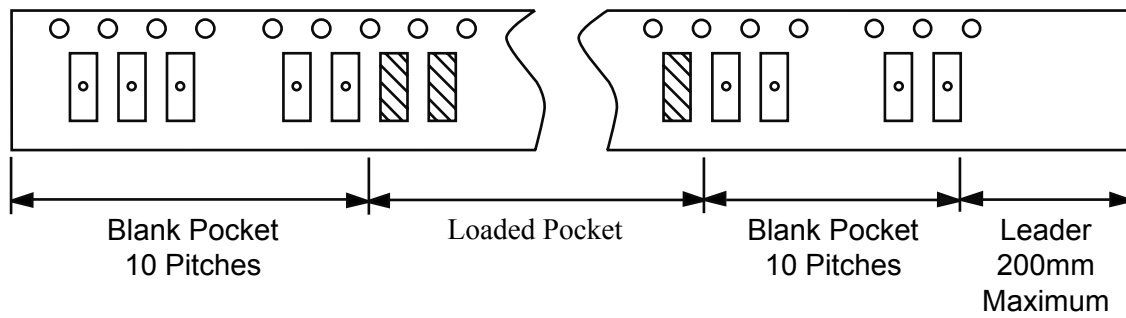


Mark	Size(mm)
P	12.7±0.5
P0	12.7±0.2
P1	3.85±0.5
P2	6.35±1.3*
F	0.5 <sup>+0.5</sup> <sub>-0.3</sub>
dxt	0.5x0.3(±0.1)
W	18.0±0.5
W0	5.5±0.5
W1	9.0±0.5
W2	1.0max
H	18.0 <sup>+0.5</sup> <sub>-1.0</sub>
H1	27.0max**
H2	36.0max**
L	3.0main
ΦD0	4.0±0.2
t1	0.6±0.2
t2	1.5max
Δh	1.0max



# Ceramic Filters

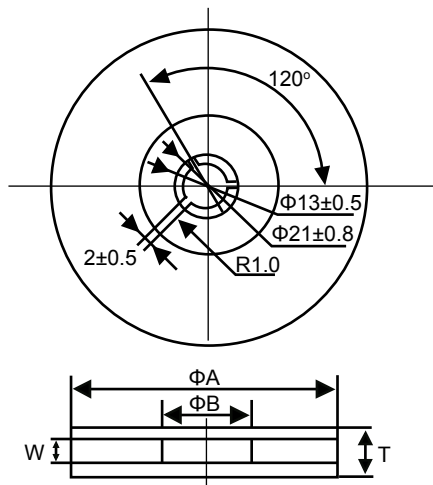
## ► Packing Method



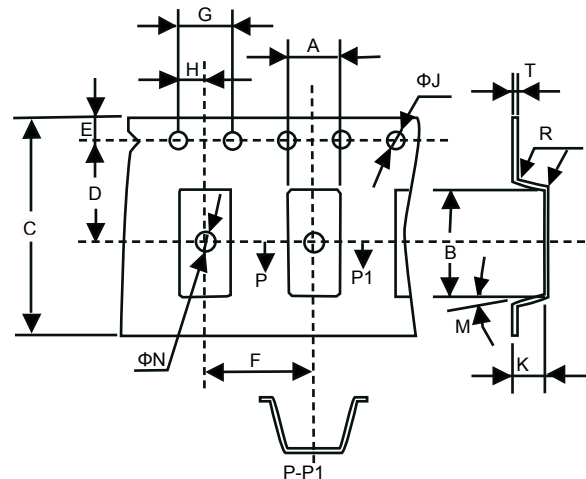
## ► Reel Dimensions (mm)

$\Phi A$	$\Phi B$	W	T	Pieces per reel	Carrier tape size
179±2	60 typ	8.4 min	14.0max	3000typ	8
179±2	60 typ	12.4 min	19.4max	3000typ	12
179±2	60 typ	12.4 min	19.4max	1000typ	12
179±2	60 typ	16.4 min	22.4max	1000typ	16
330±3	80 min	12.4 min	19.4max	4000typ	12
330±3	80 min	16.4 min	22.4max	4000typ	16

## ► Reel



## ► Tape



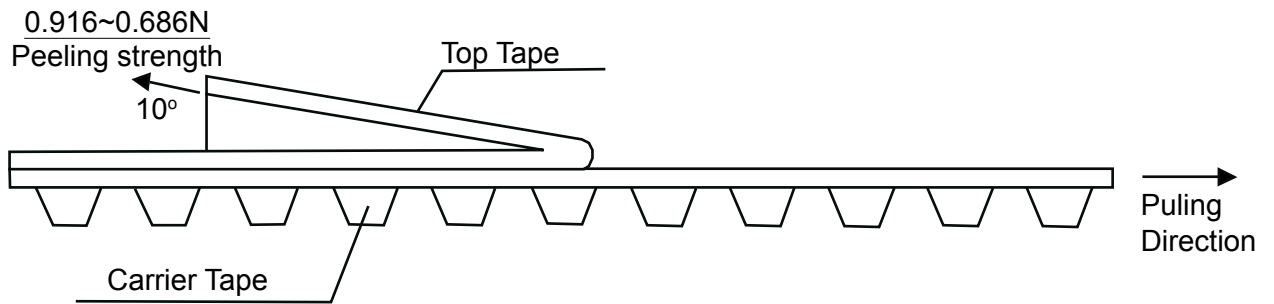
## ► Tape Dimensions (mm)

Part Number	Code Tolerance	A	B	C	D	E	F	G	H	$\Phi J$	$\Phi N$	M	R	K	T
		±0.2	±0.2	±0.3	±0.1	±0.1	±0.1	±0.1	±0.1	±0.1	±0.1	max	max	±0.2	±0.1
ZTACC MG ZTTCC MG		3.8	7.8	16.0	7.5	1.75	8.0	4.0	2.0	1.5	1.6	10°	0.3	2.1	0.3
ZTACR MG ZTTCR MG		2.2	4.7	12.0	5.5	1.75	4.0	4.0	2.0	1.6	1.6	3°	0.3	1.3	0.3
ZTACS MT/MX ZTTCS MT/MX		5.0	4.4	12.0	5.5	1.75	8.0	4.0	2.0	1.5	1.6	10°	0.3	1.8	0.3
ZTACV MT/MX ZTTCV MT/MX		3.4	4.0	12.0	5.5	1.75	8.0	4.0	2.0	1.5	1.6	10°	0.3	1.3	0.3
ZTACW MX ZTTCW MX		2.2	2.8	8.0	3.5	1.75	4.0	4.0	2.0	1.6	1.1	3°	0.3	1.3	0.2



# Ceramic Filters

## ► Test Condition of Peeling Strength



## ► Recommended Reflow Soldering Standard Conditions

